

How ya gonna
Kill em if they are
already dead?



ZOMBIE REVENGE

AVAILABLE NOW ON
SEGA DREAMCAST

MATURE
M
CONTENT RATED BY
ESRB

SEGA

Sega is registered in the U.S. Patent and Trademark Office. Sega, Dreamcast the Dreamcast logo and Zombie Revenge are either registered trademarks or trademarks of Sega Enterprises, Ltd. © SEGA ENTERPRISES, LTD., 2000. LADYSTALKER Character © CLIMAX. All Rights Reserved. SEGA of America, P.O. Box 7639, San Francisco, CA 94120-7639. The Ladystalker logo is a trademark of the Interactive Digital Software Association.



TIME STALKERS™

TEEN
T
CONTENT RATED BY
ESRB

SEGA

51011

WARNINGS Read Before Using Your Sega Dreamcast Video Game System

CAUTION

Anyone who uses the Dreamcast should read the operating manual for the software and console before operating them. A responsible adult should read these manuals together with any minors who will use the Dreamcast before the minor uses it.

HEALTH AND EPILEPSY WARNING

Some small number of people are susceptible to epileptic seizures or loss of consciousness when exposed to certain flashing lights or light patterns that they encounter in everyday life, such as those in certain television images or video games. These seizures or loss of consciousness may occur even if the person has never had an epileptic seizure.

If you or anyone in your family has ever had symptoms related to epilepsy when exposed to flashing lights, consult your doctor prior to using Sega Dreamcast.

In all cases, parents should monitor the use of video games by their children. If any player experiences dizziness, blurred vision, eye or muscle twitches, loss of consciousness, disorientation, any involuntary movement or convulsion, IMMEDIATELY DISCONTINUE USE AND CONSULT YOUR DOCTOR BEFORE RESUMING PLAY.

To reduce the possibility of such symptoms, the operator must follow these safety precautions at all times when using Dreamcast:

- Sit a minimum of 6.5 feet away from the television screen. This should be as far as the length of the controller cable.
- Do not play if you are tired or have not had much sleep.
- Make sure that the room in which you are playing has all the lights on and is well lit.
- Stop playing video games for at least ten to twenty minutes per hour. This will rest your eyes, neck, arms and fingers so that you can continue comfortably playing the game in the future.

OPERATING PRECAUTIONS

To prevent personal injury, property damage or malfunction:

- Before removing disc, be sure it has stopped spinning.
- The Sega Dreamcast GD-ROM disc is intended for use exclusively on the Sega Dreamcast video game system. Do not use this disc in anything other than a Dreamcast console, especially not in a CD player.
- Do not allow fingerprints or dirt on either side of the disc.
- Avoid bending the disc. Do not touch, smudge or scratch its surface.
- Do not modify or enlarge the center hole of the disc or use a disc that is cracked, modified or repaired with adhesive tape.
- Do not write on or apply anything to either side of the disc.
- Store the disc in its original case and do not expose it to high temperature and humidity.
- Do not leave the disc in direct sunlight or near a radiator or other source of heat.
- Use lens cleaner and a soft dry cloth to clean disc, wiping gently from the center to the edge. Never use chemicals such as benzene and paint thinner to clean disc.

PROJECTION TELEVISION WARNING

Still pictures or images may cause permanent picture tube damage or mark the phosphor of the CRT. Avoid repeated or extended use of video games on large-screen projection televisions.

SEGA DREAMCAST VIDEO GAME USE

This GD-ROM can only be used with the Sega Dreamcast video game system. Do not attempt to play this GD-ROM on any other CD player; doing so may damage the headphones and/or speakers. This game is licensed for home play on the Sega Dreamcast video game system only. Unauthorized copying, reproduction, rental, public performance of this game is a violation of applicable laws. The characters and events portrayed in this game are purely fictional. Any similarity to other persons, living or dead, is purely coincidental.

Thank you for purchasing Time Stalkers! Please note that this software is designed only for use with the Sega Dreamcast console. Be sure to read this instruction manual thoroughly before you start playing Time Stalkers.

Contents

STARTING AND SAVING	2	BATTLE ACTIONS	20
THE STORY	4	COMMAND MENU	
CHARACTER INTRODUCTIONS	5	(TOWN AND DUNGEONS)	22
CONTROLS	6	SET-UP WINDOW (DUNGEONS)	24
COMMAND MENU	8	COMMAND MENU (BATTLES)	25
GAME DISPLAY	10	STATUS SCREEN	26
GAME SYSTEM	12	LEVEL-UPS AND MASTERY	28
TOWN ACTIONS	16	CAPTURING, GRAZING,	
DUNGEON STRUCTURE	17	REARING	30
DUNGEON ACTIONS	18	QUESTS	32

SEE WEBSITE

There is so much to Time Stalkers, that we couldn't fit it into one manual!! Whenever you see this icon, please refer to the Time Stalkers website.

<http://www.sega.com/timestalkers>

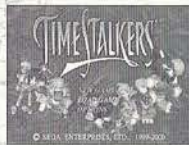
Time Stalkers is a memory card (Visual Memory Unit, or VMU (sold separately)) compatible game. To save game files and to download mini-games, you must have the amount of blocks of space available shown to the right.



STARTING AND SAVING



Place the Time Stalkers disc into your Dreamcast console, press the disc down until it clicks into place, close the lid and press the POWER Button to turn ON the power. The play demo will start a few moments later. Press Start during the play demo to display the Title Screen. Press Start once more to display the Mode Select Screen.



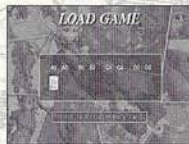
STARTING A GAME

Select "NEW GAME" from the Mode Select Screen, then press the **A** Button to enter your selection. You will be shown the opening story in which our hero, Sword, finds himself lost in a fantasy world. Once the opening story is over, the game will start. (You cannot skip the opening story).



CONTINUING A PREVIOUSLY SAVED GAME

Select "LOAD GAME" from the Mode Select Screen, then press the **A** Button to enter your selection. Select a memory card, followed by a game file, then press the **A** Button to continue playing a previously saved game.



WHITE: Save file (a file saved at Sword's House)

YELLOW: Fast save file (a file saved half way through a dungeon)

CHANGING GAME SETTINGS

Select "OPTIONS" from the Mode Select Screen, then press the **A** Button to enter your selection. All the game settings can be changed.

SAVING

You can save the game in Sword's House during game play. When you restart the game, you will start from the place where you last saved.

Within the Fountain Square Piece
(Talk to Mutton the Butler) →P9

Sword's House



FAST SAVE

You can save when your character is in a dungeon and completes a floor. After saving, the Title Screen will be displayed. Your fast save file will be deleted once you have used the file.

Dungeon Set-Up Window →P24



FILES

The indicators are different for normal saving and fast saving.

SAVED DATA (WHITE)

FAST SAVED DATA (YELLOW)



MUTTON THE BUTLER

He looks after Sword's House.

*My name is Mutton.
How can I be of service?*



THE STORY

This is a fantasy world.

A medieval world, an ancient world, and even modern Japan...

Countless worlds nonsensically bind to form this amazing and yet tiny world.

So who created it? And for what reason or purpose?

No one knows.

A man is summoned.

His name is Sword. He is a wandering adventurer.

A mysterious old man welcomes Sword to the world and calls him a "hero."

The old man gives him a mission. Sword must solve the hidden mystery of this world.

Who created this world? And why?

And... is it possible to escape from it?

Many mysteries and strange labyrinths lie before Sword as he sets off on his adventure.

But Sword is undaunted and decides to bravely defy the myriad obstacles that stand in his path.

PIECES

This world contains a bizarre collection of geographical features from many eras and locations, such as Medieval Europe and 1980s Japan. Each geographical feature is known as a "Piece." In every "Piece," the people, who once lived in each place and each era, continue to live their normal everyday lives. The world is enwrapped in the space of a different dimension, and consequently, its geography frequently changes.

THE HERO'S CREST

Your character must be carrying the Hero's Crest to enter a dungeon. Sword receives the Hero's Crest from the old man at the beginning of the game. As the story develops, Sword is able to pass the Hero's Crest to the following characters once he has met them. You can change the character that you are currently using by selecting "Change Character" in Sword's House.

CHARACTER INTRODUCTIONS

These are the main characters. How will Sword meet them?



The main character. **Sword** travels without destination. As much as he tries to pose and appear to be a ladies' man, he's actually rash and careless. His sword ability, however, is first-class.



Rao is a halfling; half human and half Rioring Tribe lion soldier. He is uncommunicative, but very brave. Rao is a proud and lonely warrior who seeks fulfillment through fighting.



Marion is a doll in every sense of the word! She is a battle machine produced by an unknown manufacturer. She is devoid of emotion, but she is fascinated by humans.



Nigel is a treasure hunter. He loves danger. He has an inseparable friend named **Friday**, who is a Sprite.



Pyra is an elf. She is also a magician with a violent temper. Although she is serious, she causes fear and is very scary. She is gifted with advanced offensive magical abilities.



Lady is a young woman who has run away from her distinguished family. She's a real troublemaker. Lady is impulsive, and never considers the consequences of her actions. She has the best fighting ability in the world.

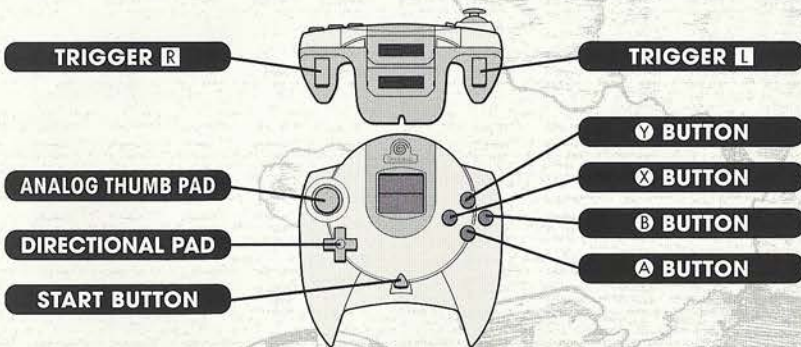


CONTROLS



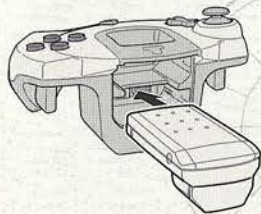
This is a one-player game. Connect your Dreamcast Controller to Control Port A.

- * Insert a memory card into Expansion Socket 1 of your controller.
- * To save game files, you must have the following amount of blocks of available space on your memory card.
Main game: 16 Mini-games: 54-123 for each game
- * To soft reset, simultaneously press and hold the **A**, **B**, **X**, **Y** and Start Buttons on the controller.



THE JUMP PACK™ (SOLD SEPARATELY)

- * Make sure that you insert the Jump Pack into Expansion Socket 2 of the controller.
- * Do not remove the memory card or Jump Pack while saving.



MOVEMENT WINDOW (TOWN)

Button	Function
Analog Thumb Pad	Movement (Press fully to run)/Look around (First person view)
Directional Pad (D-Pad)	Selection/ Look around (First person view)
A Button	Enter a selection/Conversation/Enter a building
B Button	Cancel/Close all the windows
X Button	Change camera angle (First person view)
Y Button/Start Button	Open the Command Menu (-P22)

Triggers **L**/**R** and the Start Button are not used.

MOVEMENT WINDOW (DUNGEON)

Button	Function
Analog Thumb Pad	Movement (Press fully to run)
D-Pad	↑ : Change map; → : Switch the Map ON or OFF
D-Pad	↓ : Change the camera angle (Overhead→Rear)
A Button	Check Mode→Pick up an item/Initiate a battle (-P18)
B Button	Cancel/Close all the windows
X Button	Search (-P18)
Y Button/Start Button	Open the Command Menu (-P22)
Triggers L / R	Rotate the camera angle (During the overhead camera angle)

Left on the D-Pad.

BATTLE WINDOW (DUNGEON)

Button	Function
Analog Thumb Pad/D-Pad	Selection
A Button	Enter your selection
B Button	Cancel
Triggers L / R	Party member selection

The **X**, **Y** and Start Buttons are not used.

COMMAND MENUS



●MOVEMENT (TOWN)

→P22

Items	Equip your character with, dispose of and view the details of items
Skills	Skill Menu, registration*, removal, seal**
Spells	Spell Menu, registration, removal
Status	Display the Status Window (Only for the main character) (→P26)
Lists	Display a list of acquired items and captured monsters
Allies	Let monsters in and out of their capsules, change battle formation

* "Registration" is when your character is able to use a newly learned magic skill or a captured monster. Skill and magic registration is automatic. Monster registration is not automatic.

** "Sealing" is necessary at times when your character's parameters are too low to be able to "master" a registered skill. Sacrifice a skill by sealing it in order to use your character's other skills while its parameters are still low.

●MOVEMENT (DUNGEON)

→P22

Items	Equip, use, dispose of, identify*, repair*, and view the details of items
Skills	Skill Menu, check your monster allies' skills
Spells	Spell Menu, cast magic spells, use the spells of your monster allies
Status	Status Screen (main character and allies) (→P26)
Lists	Display a list of acquired items and captured monsters
Allies	Reorganize the fighting formation of your monsters

* Special skills and items are needed to "identify" and "repair." Furthermore, "spells" and "skills" can only be registered outside of dungeons. "Spells" and "skills" are automatically registered even when the windows are not displayed.

●BATTLES (DUNGEONS)

→P25

Attack	Attack techniques, weapons or bare fists (VIT Consumption)
Spell	Attack using magic (MP Consumption)
Item	Use items
Defend	Defend, dodge and run away (Not necessarily 100% successful)
Movement	Move within your sector (Equipped "boots" or skill required)
Capture	Capture a monster (Registration "capture" of skill required)

●SET-UP WINDOW (DUNGEONS)

→P24

Bonus Point Distribution	Allocate bonus points (e.g. to the "basic ability parameters")
Skills	Check and seal your own and your monster allies' skills
Allies	Let your monsters in and out of their capsules
Fast Save	Save a game file in a dungeon (→P3)

●SWORD'S HOUSE (TALK TO MUTTON)

→P3

Store Item	Save items
Collection	Display a collection item
Save	Save a game file
Character Change*	Replace Sword with a new main character
Options	Change game options and view character profiles

* You can only do this when the story has developed.

●THE CHURCH

SEE WEBSITE

Monster Revive	Revive registered monster allies (There is a charge for this)
----------------	---

●ITEM STORE

SEE WEBSITE

Buy	Buy an item
Sell	Sell an item

●HOLOGRAM MACHINE (IN THE MONSTER HOUSE)

→P30

Graze	Put a monster in the Monster House
Encapsulate	Take a monster out of the Monster House
Register	Register a monster (You can also give the monster a name)
Release	Remove a monster (A selected monster will be completely deleted)

●VMU DEVICE (IN THE MONSTER HOUSE)

SEE WEBSITE

Download Game	Download a mini-game to your VMU
Delete Game	Delete the mini-game that is currently stored in your VMU
Tokens	Buy, Sell and Exchange them for items, download into VMU
Download Monster	Download monsters to and from your VMU

GAME DISPLAY



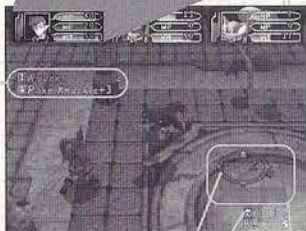
●MOVEMENT SCREEN (TOWN)



There are no onscreen indicators when your character is moving around town. **11** and **12** cannot be displayed at the same time in a dungeon.

- 1** Character Portrait
- 2** Hunger Meter
- 3** LV (Level)
- 4** HP (Hit points)
- 5** MP (Magic points)
- 6** VIT (Vitality)
- 7** Search indicator (Items and monsters that you can search are indicated as your character approaches them)
- 8** Compass (This always points north)
- 9** Elapsed time (Only for the current dungeon)
- 10** Floor indicator

●MOVEMENT SCREEN (DUNGEON)



●BATTLE SCREEN (COMMAND MENU)



14

●BATTLE SCREEN (BATTLE FIELD)



16

17

- 11** Radar
- 12** Auto map
 - Gray Unexplored area
 - Green Unsearched area
 - Yellow Searched area
 - Red Ally
 - Red Enemy and/or Trap
 - Blue Items
- 13** Attribute icon
This displays the attributes of the floor (→P17)
- 14** Command Menu (During battles) (→P25)
- 15** Battle field indicator
 - Blue Within range
 - Red Out of range
 - Yellow Ally
- 16** Enemy status display (Only one enemy at a time)
- 17** Monster name, hit rate, expected damage

Modifying the Movement Screen in a Town

- X** Button Overhead view↔First person view
- D-Pad/** Rotate camera angle (Only when Analog Thumb Pad using first person view)

Modifying the Movement Screen in a Dungeon

- D-Pad Up** Radar↔Auto Map
- D-Pad Right** Switch the Radar ON/OFF
- D-Pad Down** Overhead camera angle↔Rear angle
- Triggers L/R** Rotate camera angle (Only when using overhead camera angle)

GAME SYSTEM



The key to success in Time Stalkers is to remember to make all necessary preparations in town in order to negotiate the dungeons.

●TOWN

Here you can buy and sell items, gather information and prepare for your next adventure. The following facilities can be found in town:

- Item Store**Buy and sell equipment and food
- Church**Revive monster allies
- Monster House**Register and store your monster allies and download mini-games
- Mr. Noiman's House** .Quest introduction*/Sell precious goods to Mr. Noiman
- Sword's House** Save a game file, store items, and change the character that you wish to play with*

* You cannot do these things until the story has developed.



●DUNGEONS (THE REALM OF ADVENTURE)

The dungeons are where the most exciting part of your adventure happens. Here you can fight monsters and pick up items. The floor plan of every dungeon will randomly generate every time you enter, so you will never see exactly the same dungeon twice.



●QUESTS (YOUR JOB)

As the story develops, you can get new quests (jobs) at Mr. Noiman's House. You can re-enter previously cleared dungeons and set off on new missions. There are many tasks to complete, such as searching for specific items or defeating specific monsters. (→P32)



●STATUS

HP (Hit Points)

Physical strength. This is depleted when your character receives damage. If the main character's HP is reduced to 0, your dungeon quest will end. Also, when the Hunger Meter reaches 0, your character will gradually begin to lose HP.



Hunger Meter

MP (Magic Points)

This is the essential parameter for using magic. MP will decrease when you cast magic spells.

VIT (Vitality)

This is the essential parameter for using techniques. VIT will decrease when you use techniques. However, VIT will gradually increase as time passes.

Hunger Meter

This is the essential parameter for inspecting the dungeons. The Hunger Meter will decrease when you inspect orange colored areas. The Hunger Meter will also gradually decrease as time passes.

●LV (LEVEL) AND TITLES

LV (Level)

Experience levels are only applicable in dungeons. Your character's level will rise by 1 point for every 100-experience points they acquire in a dungeon. Your character's fighting power, defensive power, HP, MP and VIT will increase with each successive level up. Similarly, your character will be able to carry more items, and will be able to use magic and equipment which were previously not mastered. However, as soon as your character leaves the dungeon, their level will return to 1 again. (→P28)



Titles

Every time your character leaves a dungeon (whether through victory or defeat) it may be promoted to a new title. Unlike LV, which restarts from LV 1 every time your character enters a dungeon, titles build on the experience gained from each successive dungeon. When your character is promoted to a new title, they will be able to use new magic and skills. These spells and skills must be registered. Your monster allies can also receive new titles. (→P28)

●BATTLES AND SPECIAL ABILITY COMMANDS

Items (Equipment)

There are various "equipment items" such as weapons and armor, and "use items" such as tools.

Techniques (weapon items): There are several ways of attacking using techniques, both bare handed or using weapon items.

These are only displayed during battles. Each weapon can be used to perform several techniques, and the total of performable techniques for each weapon increases with the level ups.

Techniques deplete VII. **SEE WEBSITE**

Magic (Registered)

Magic is a highly effective way of attacking. Magic depletes MP. Magic is usually more powerful than techniques are.

Attributes: "Fire," "Ice," "Lightning" and "No Attribute." "Fire" and "Ice" are opposite attributes "Lightning" is an independent attribute, so it is effective against both "Fire" and "Ice."

Level: Spells also have levels, and become more effective with each level up (→P28).

Classifications: Spells are displayed in the selection window using the following prefixes.

Mega-: Every member of a party, Giga-: All enemies

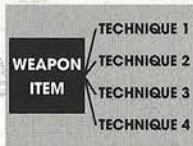
Skills (Registered)

Your character will gain many special abilities, such as extra strength when it acquires a new skill. **SEE WEBSITE**

Level: Skills have levels too, but do not level up (→P28). You can acquire separate skills at every level.

●MASTERY

During gameplay, your character will acquire "equipment items," "magic," and "skills," which you can then equip or register. However, some items, magic and skills require the character to have specific basic parameters (strength, wisdom, charisma, etc. →P28) in order to be effective. Your character will have to gain experience points, and you will have to allocate bonus points in order to "master" some items, magic and skills.



The relation between weapons and techniques



Magic: the attribute factor

●DUNGEON BATTLES

Parties

You can form a party of up to 3, including the main character. Enemy monsters can form parties of up to 4.

Ally Monsters

If you successfully "capture" a monster during a battle, it can become a member of your party (→P30). Register your newly captured monster in the Monster House, and you will be able to revive it in the Church **SEE WEBSITE** should it be defeated in a dungeon. You can also make it work for you in a mini-game **SEE WEBSITE**

Aggression

This is the level of enthusiasm for battles that every enemy monster has. Aggression has a strong influence on the behavior of monsters, because although a monster that likes to fight will attack, monsters that dislike battles will not. (→P20)

●OTHER THINGS

Legendary Items

There are only a few of these precious items in Time Stalkers. At the Blacksmith, you can add skills from other items to your legendary item (Transfer) or lower the parameter value to master using the item (Improve). **SEE WEBSITE**

Collection Items

You'll have a lot of fun collecting these. You can display them in the Collection Room next to Sword's House and go and admire them whenever you like, just as though you owned your very own museum. **SEE WEBSITE**



TOWN ACTIONS



The town (Fountain Square etc.) is the main base for the player in Time Stalkers. You can get information from various people, buy and sell items and prepare for the next dungeon. Furthermore, all the events happen in the town, so don't forget to explore every corner. The events will give you precious information as to what to do next. The actions that you can perform in the town are outlined below.



●COMMAND MENU (Y BUTTON)

Press the Y Button to open the Command Menu to check the condition of your characters. (→P22)



●TALKING AND READING (A BUTTON)

To collect information, press the A Button near other characters and signboards to speak and read. Similarly, press the A Button in stores to buy weapons and armor. Don't forget to drop into stores before entering a dungeon.



●ENTERING BUILDINGS (A BUTTON)

When the name of a building is displayed, press the A Button to enter.

The Townfolk

It is possible to get new information from people with whom you have already spoken to, so talk to the townfolk as much as possible.



DUNGEON STRUCTURE

●DUNGEONS RANDOMLY GENERATE

The layout and floor plan of every dungeon is randomly generated every time your character enters. There are countless completely original and unique dungeons to be discovered in the amazing world of Time Stalkers.

●SECTORS

Each floor of the dungeon is divided into units called sectors. Check these sectors for traps and hidden items. During battles, four enemies can fit into one sector.

●FLOOR STRUCTURE AND ATTRIBUTES

Dungeons consist of many floors, which have a specific structure. You must clear the floors one by one, but remember that once you have cleared a floor and advanced to the next one, you cannot return. Furthermore, floors can have certain attributes: fire, ice or lightning, which have an influence on magic.

●SEARCHING FOR ITEMS

Many items (some of which are hidden) are scattered around dungeons. Press the X Button to search orange colored sectors. Don't forget that investigating will affect your character's stomach, making it hungry (this is displayed in the Hunger Meter). When the stomach is empty, you can no longer search.

●SETTING OFF TRAPS

Traps are always hidden and will be set off if your character steps in a sector containing a hidden trap. Press the X Button not only to search for items, but also to search for traps.

●MONSTER AGGRESSION

Depending on its aggression, there is a chance that if you meet a monster in a dungeon, it won't attack you. By looking at the Emotion Indicator of a monster, you will usually be able to determine how much a monster enjoys fighting or not.

●RECOVERY ROOMS

In all dungeons, and on any floor, there are recovery rooms where you can fully recover lost or spent HP, MP and VIT.

DUNGEON ACTIONS



The dungeons are where the real action and adventure occur. You must skillfully guide your character through by picking up items, avoiding traps, and by toppling monsters that dare stand in your way, to complete your goal.

There are limits on the number of items that each character can take into a dungeon (Sword can only take four). Get rid of unnecessary items (either let Mutton take care of them or sell them at a store) before entering a dungeon, to ensure that your character is carrying the correct number of items.

●CHECK MODE (A BUTTON)

Press the A Button when you are close to items and monsters and their information will be displayed. This is the Check Mode. Press the A Button again to pick up an item or initiate a battle.



●COMMAND MENU (Y BUTTON)

Press the Y Button when your character is moving freely in the dungeon (not engaged in battle) to display the Command Menu. (→P22)



●SEARCH (X BUTTON)

Press the X Button to search the sector that your character is standing in and the surrounding four sectors to search whether or not there are any traps. If anything is found, it will be displayed in the radar. You should be suspicious of orange sectors on the radar, because hidden items can often be found in them. But every time you search an area, your character's Hunger Meter will be reduced. The Hunger Meter will also gradually decrease as time passes.

Unsearched area
(orange)

Searched area
(green)



●ESCAPING FROM DUNGEONS

There are three ways to leave a dungeon:

1. Defeat a boss and leave through the exit
2. Use an escape item (or magic spell)
3. When the main character of your party is defeated

Whether you leave a dungeon in success or failure, your characters' LV will return to 1. Depending on experience earned in a dungeon, your characters may be promoted and get new "Titles" and they may also have learned new magic or skills. Demotion is impossible.

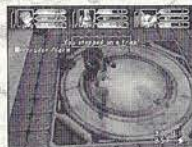
If the main character is defeated, the following will happen:

1. All the items that are not currently equipped will be lost
2. Currently equipped items may be damaged (You will have to pay to have them repaired at the Blacksmith)
3. Unregistered monsters will disappear



●DIFFERENT SORTS OF TRAPS

There are many traps waiting to ruin your day (See chart right)



Trap Name	Effect
Blast	Fire damage
Blizzard	Ice damage
Lightning	Lightning damage
Jagged Spear	Physical damage
Gas Bomb	Curse inflicted
Intruder Alarm	Monster aggression increases
Spiked Ceiling	Physical damage
Magic Darts	Battle parameters decrease
Bear Trap	Cannot move during the battle
Status Clear	Special Effects/Curse is nullified

BATTLE ACTIONS



Dungeon battles can be initiated by the main character or by monsters.

●INITIATING A BATTLE

You can use the Check Mode if a monster enters a sector close to the main character. Press the **A** Button to check all possible opponents in the vicinity. Press the **A** Button again to initiate a battle.



Check possibility indicator.



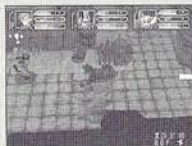
Press the **A** Button to use the Check Mode.



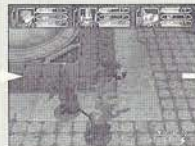
Press the **A** Button to initiate a battle.

●WHEN A MONSTER INITIATES A BATTLE

Firstly, the monster finds the main character (and allies). If the monster has a high level of aggression, it will rush into battle. In contrast, if the monster has a low level of aggression it is highly likely that it won't rush into battle.



A monster finds your character.



If the monster has a high level of aggression...



It will rush into battle.

●ENDING A BATTLE

There are three conditions that preclude the end of a battle.

DEFEAT ALL THE MONSTERS

Defeat all the enemy monsters. Your character and any allies will earn experience points, and often a monster will drop an item, which you can then pick up.

RUN AWAY

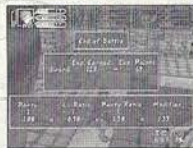
If you are feeling particularly cowardly and your prospects of defeating the enemy monsters are bleak, you have the option of making your character and any allies run away. Naturally, you will not earn any experience points. (If your sector is enclosed, your chances of a successful escape will lower).

IF THE MAIN CHARACTER IS DEFEATED

If the main character's HP reaches 0, the present quest will be brought to a sudden end. The main character will then be returned to Sword's House.

●BOSS BATTLES

There is a Boss (or group of bosses) on the last floor of every dungeon. Defeat the Boss to clear, then leave the dungeon.



COMMAND MENUS (TOWN AND DUNGEONS)



Press the **Y** Button while moving freely around town and dungeons to display the Command Menus. Use the D-Pad to select a command and press the **A** Button to enter your selection.



Command Menu (Town)



Command Menu (Dungeon)

*** You can only register magic and skills in town.**

Command Name	Explanation	T	D
	T: Movement Screen (Town) D: movement Screen (Dungeon) S: Set-up Window		

ITEMS Item Introductions [SEE WEBSITE](#)

Unequipped items are shown in white and equipped items are shown in yellow.

		T	D
Equip/Remove	Equip an item/remove an item	✓	✓
Use	Use an item (After command selection, select a target object)	X	✓
Drop	Throw away an item (It will vanish forever)	✓	✓
Identify**	Check the name and functions of an item	X	✓
Repair**	Repair damaged items	X	✓
Details	Display detailed explanations about hit ratios, techniques, etc.	✓	✓
View	View presently equipped items	✓	✓

** Skill Registration Required.

SKILLS Skill Introductions [SEE WEBSITE](#)

Select to display a list of registered skills. Select one to display the following:

		T	D	S
Remove	Remove a skill	✓	X	X
Seal	Seal a skill (→P29)	✓	X	✓
Register Skill*	Register a skill	✓	X	X
Check Allies' Skills	Check and seal your allies' skills	X	Δ	✓



Skill Registration (Only in Town)

Δ=You can check but you cannot seal.

SPELLS Spell Introductions [SEE WEBSITE](#)

Select to display a list of registered magic. Select one to display the following:

		T	D
Use	Cast a spell	X	✓
Remove	Remove magic spell	✓	X
Register Magic*	Register magic spell	✓	X
Use Allies' Magic	Use your allies' magic spell	X	✓



Magic Registration (Only in Town)

STATUS Status Screen →P26

Select to view the status screen.



Monster Reference

LIST

Select to display the following. An entire list of items and monsters that appear in the story are displayed. "???" indicates something not yet discovered. Try and discover all the items and monsters in Time Stalkers.

		T	D
Monster List	Display captured monsters with picture and explanations	✓	✓
Item List	Display acquired items with explanations	✓	✓

ALLIES

Let monsters in and out of their capsules and change battle formations. Select to display a list of monsters. Select one to display the following:

		T	D	S
Release	Let your monster out of its capsule	Δ	X	✓
Insert	Put your monster back into its capsule	Δ	X	✓
Change Battle Formation	Change the formation of your party	Δ	✓	X

Δ You can control but they are not displayed on the screen.

SET-UP WINDOW (DUNGEONS)



Before continuing to the next floor of the dungeon, you can carry out the following:

● BONUS POINT DISTRIBUTION

Allocate the bonus points gained through level ups to your character's basic ability parameters. (→P26)

Bonus Point Distribution Allocate bonus points



Bonus Point Distribution

● SKILLS

It is possible to make registered skills ineffective by sealing them. A skill is not effective if the parameter value for "mastering" it is too high.

Seal Seal a skill (→P29)

Check Allies' Skills Check or seal your allies' skills

● ALLIES (MONSTER CAPSULES)

You can let monsters in and out of their capsules. You cannot change the battle formation of your party.

Release Let your monster out of its capsule

Insert Put your monster back into its capsule

Press \uparrow / \downarrow on the D-Pad to view magic, skills or items, and press \leftarrow / \rightarrow on the D-Pad to view every object.



Set-Up Window

● FAST SAVE

Perform a fast save, and the game will end.

● NEXT FLOOR

Continue to the next floor without saving.



Sealing a Skill



Letting Monsters in and out of their Monster Capsules

COMMAND MENUS (BATTLES)



Battle Command Menus are displayed during battles. Press the **A** Button to select a command.

● TECHNIQUES (=WEAPON ITEMS)

Attack using a weapon item or even a bare hand. Technique attacks use up VIT. **SEE WEBSITE**

● SPELLS (REGISTERED)

Attack using registered magic spells. Magic attacks use up MP. **SEE WEBSITE**

● ITEM

Use an item that your main character is presently carrying. **SEE WEBSITE**

● DEFENSE

Defend your characters in the following way:

Block Defend against an attack

Dodge Dodge an attack

Run Away Run away from enemies

* Your defensive choices are not guaranteed.

● MOVEMENT

Move within the your characters' sector (to one of four squares in your sector). You can do this if your character is equipped with boots, or if you have earned and registered the Movement Skill

● CAPTURE (WHEN "CAPTURE" IS REGISTERED)

Capture a monster and put it in a capsule.
* Capture is not necessarily 100% successful.



Command Menu (Battles)

STATUS SCREEN



From the Movement Screen (town or dungeons) press the **A** Button to display the Command Menu, then select "Status" to display the Status Screen. View the status of your allies (in a dungeon and if they are with you) by pressing the D-Pad **◀▶**.

NUMBER VALUES

Yellow: value increases/high
Blue: value decreases/low

00/00: present value/
necessary value

Title	Earn dungeon experience to gain a new title (This is not LV)
Ailment	Your character's state of health
●CHARACTERS	
Level (LV)	Your character's current level (Only relevant in dungeons)
HP	Decreases when damage is received (0 = KO'd)
MP	Decreases when magic is used
VIT	Decreases when techniques are used; VIT is naturally regained
Hunger Meter	Measures your character's hunger (0 = Gradual HP loss)
EXP	Win battles to gain experience points (100 EXP = New LV)
BONUS	Level up to earn bonus points; allocate points at set-up screen (→P28)
Item Number	Level up to carry more items
Gold	The amount of gold your character is carrying
●BASIC ABILITY	
Strength (STR)	Increases the power of technique attacks
Dexterity (DEX)	Influences the order of battles, hits and evasion
Constitution (CON)	Influences defense against attacks
Willpower (WILL)	Influences defense against magic and hunger
Wisdom (WIS)	Influences the effectiveness of magic and ability to identify items
Charisma (CHA)	Influences monster allies' defense and capture probability
Luck (LUCK)	Influences setting off traps and discovering items

●BATTLE ABILITY

Attack Power (ATKPWR)	Basic attack power
Penetration (PNTRT)	Armor piercing power; only effective when higher than enemy's armor
Evade (EVADE)	Probability of evading technique attacks
Armor (ARMOR)	Ineffective if lower than enemy's penetration level
Defense Power (DEFPWR)	Physical defensive power of your character
Armor Defense (ARMDEF)	Defensive power from clothes, etc. (Ineffective if pierced)
Magic Evade (MAGEVD)	Probability of evading magic spells
Magic Defense (MAGDEF)	Defense strength against magic attacks
Curse Evade (CRSEVD)	Probability of evading a curse; there are four types of curses
Attribute Revision Level	Revision level after receiving an attribute attack

●QUESTS

Confirm the quest (job) that you are currently undertaking.

●AILMENTS

Your character can become sick or cursed depending on certain attacks and traps. Use an item etc. to cure the problem as soon as possible. Leave the dungeon to completely cure your character of all curses.

CONFUSION (CONFUS)

Confusion (1 floor)	Inputted commands differ from character's movements
Charm (1 floor)	Your character will not be able to discern between allies and enemies
WEAKNESS (WEAKNS)	
Weaken (entire dungeon)	One of the parameters (attack, defense, wisdom, luck) will decrease
Headache (some turns)	MP depletion level will increase (only when using magic spells)
Strain (some turns)	VIT depletion level will increase (only when using techniques)

RESTRICTION (RESTRC)

Poison (1 floor)	HP will reduce for a fixed time
Fatigue (1 floor)	VIT will reduce for a fixed time
Mute (some turns)	Your character will not be able to use magic
BATTLE POWER (BATTLE)	
Stun (during battle)	For 1 turn your character will be unable to move
Paralysis (during battle)	Your character will be unable to move until the end of the battle

LEVEL-UPS AND MASTERY



●LEVEL-UPS

• EXP

Acquire 100 experience points (EXP) in battle and your character's level will increase by 1. The amount of EXP acquired depends on your character and your enemy's difference in level and the number of allies vs. enemies and number of parties attacking your party in any given battle. If your main character and monster allies have a high level and are fighting a single enemy with a low level, they will acquire relatively few experience points.

• STATUS-UP

When your character level-ups, its status (HP, MP etc.) will increase accordingly. Because the basic ability parameters (strength etc.) also increase, the character will be able to master new items and magic. Your character will be able to carry more items, and the level of registered magic will also increase.

•BONUS POINTS

Your main character will receive bonus points after it level-ups. These can be allocated to the basic ability parameters (strength, etc.) to strengthen your character. You will also be able to add to specific parameters to "master" (→P29) new items, skills and magic.

* You can only allocate bonus points in the dungeon set-up window (→P24).

• MONSTER ALLIES' LEVEL-UPS

The monster allies who are currently in your party will level up after battles in the same way as your main character. Monsters do not receive bonus points though.



●EXTRA POINTS

If you pick up items that have a number such as "+3" or "-2" attached, the item will have an effect on some of the parameters.

●MASTERY

Some powerful items and skills require specifically high basic ability parameters (strength etc.) (→P26) in order to be effective and therefore mastered. Additionally some items require your character to have a specific level in order to master them.

• EQUIPMENT ITEMS (INDIVIDUAL REQUIREMENTS)

Some weapons, clothes, shields, boots and rings have specific parameters that must be met in order to be effective. If these requirements are not fulfilled, they will cause the negative effects outlined in the chart below. It is still possible to equip such items.

(Main negative effects of equipment items)

Weapons	Attack is halved; some techniques impossible; skills ineffective
Clothes	Armor level, defense, and magic defense are halved
Shields	Armor level, defense, and magic defense are halved
Boots	Evasion and magic evasion are halved; some skills ineffective
Rings	Particular skills are ineffective

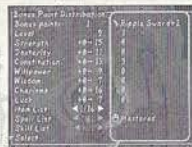
• Magic (individual requirements)

There are special parameters to be met in order to master every type of magic. Similarly, if a required status is unfulfilled, the magic will be unusable.

• Skills (general requirements)

The required parameters to master a new skill are equivalent to the sum total of all the presently registered skills. If the character's status does not fulfill the necessary conditions, the skill will be ineffective.

Set-Up Window



Required parameters to master using a long sword

●SEALING SKILLS

Another way to master a skill is to "seal" skills at the set-up window or in a town when the character's status is still low at the beginning of a dungeon. For example, if you have 4 skills, you will be unable to use any of them if your character's parameters are too low. Seal one or two of these skills in order to use the others.

CAPTURING, GRAZING, REARING



The main character can capture monsters to make new allies. Register the monsters to rear and graze them.

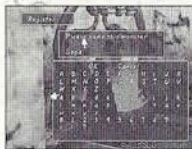
●CAPTURING MONSTERS

Select the command "Capture" during a battle to capture a monster (if the required skill "Capture" is registered). The main character can carry the monsters around at all times in their capsules. Let the monsters in or out of their capsules, reorganize their battle formations or include them in your party using the Command Menu or at the Set-Up Window. You can only capture up to eight monsters at a time.



●REGISTERING MONSTERS

Bring captured monsters back to the town and register them at the Monster House. You can make unregistered monsters take part in battles, but if the main character is defeated, the unregistered monster will disappear forever. Register a monster and you can put it to graze in the Monster House or rear it in a mini-game.



●GRAZING MONSTERS

If you do not want to put a monster in a capsule you can put it to graze in the Monster House from the Hologram Machine in the Monster House. Select "Encapsulate" to take a grazing monster from the Monster House into a dungeon.



ENLARGING THE MONSTER ROOM

Only eight monsters can graze in the Monster House, but pay the carpenter some money and you will be able to have your Monster House enlarged to accommodate up to twenty-four grazing monsters.

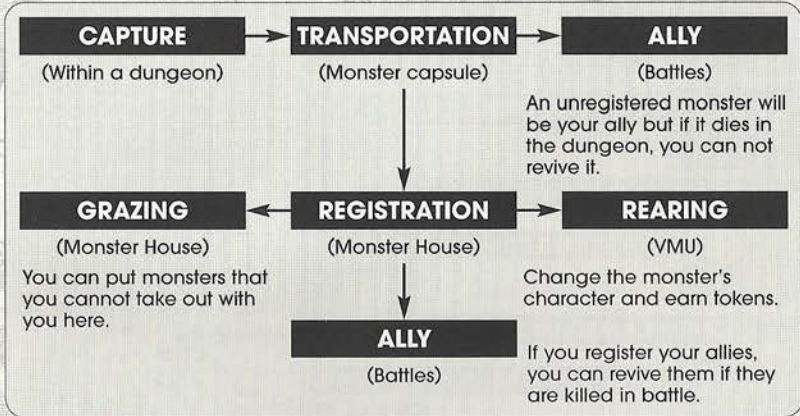
●TAKING OUT MONSTERS

You can take registered monsters into a dungeon with your main character as members of your party. To take your favorite monsters to a dungeon, select "Encapsulate" at the Hologram Machine in the Monster House.



●REARING MONSTERS

You can rear registered monsters in the VMU (sold separately) mini-game "MOONLIGHTER". [SEE WEBSITE](#) Send the monster to the mini-game from the VMU Device in the Monster House. You can then change your monster's character and gain experience.



* There are also mini-games that you can buy within the world of Time Stalkers which can be downloaded to your VMU. For more information, [SEE WEBSITE](#)

QUESTS

The main characteristic of Time Stalkers is that the dungeons regenerate every time your character enters, creating an infinite number of adventure possibilities. The Quests have been included in the game to add to the enjoyment of being able to reenter countless new dungeons. Types of Quests include defeating a fixed number of a specified species of monster, defeating a different boss than the one defeated the first time you cleared the dungeon and searching for or withdrawing a specific item. Mr. Noiman, the mysterious rabbit that lives in a house on the hill will introduce these quests to you - for a fee of course. Have fun returning to the dungeons that you previously cleared. You will find more than enough fantastic items to deeply enrich your Time Stalkers experience.

THE QUESTS



DEFEAT A DIFFERENT BOSS



CLEAR A NEW NUMBER OF FLOORS



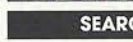
DEFEAT A FIXED NUMBER OF MONSTERS



CAPTURE A SPECIFIC SPECIES



DEFEAT A FIXED NUMBER OF A MONSTER



SEARCH FOR A SPECIFIC ITEM



MR. NOIMAN

This rabbit may pretend to know nothing and you will find it hard to figure him out, but Mr. Noiman is an important little rabbit and will give you plenty of jobs. He is a devoted husband.

*Ha! Who are you?
Oh! This is my house.
You can't just barge
in here!*



***THIS LIMITED WARRANTY IS VALID FOR U.S. AND CANADIAN SEGA DREAMCAST SOFTWARE MANUFACTURED FOR SALE IN AND PURCHASED AND OPERATED IN THE UNITED STATES AND CANADA, ONLY!**

Limited Warranty

Sega of America, Inc. warrants to the original consumer purchaser that the Sega Dreamcast GD-ROM shall be free from defects in material and workmanship for a period of 90-days from the date of purchase. If a defect covered by this limited warranty occurs during this 90-day warranty period, Sega will replace the defective GD-ROM or component free of charge. This limited warranty does not apply if the defects have been caused by negligence, accident, unreasonable use, modification, tampering or any other causes not related to defective materials or workmanship. Please retain the original or a photocopy of your dated sales receipt to establish the date of purchase for in-warranty replacement.

WARRANTY REPAIRS

IF YOUR SEGA DREAMCAST GD-ROM DISK IS DEFECTIVE OR HAS BEEN DAMAGED, DO NOT RETURN IT TO SEGA. RETURN THE DISK, IN ITS ORIGINAL PACKAGING, ALONG WITH YOUR ORIGINAL SALES RECEIPT TO THE RETAILER FROM WHICH THE SOFTWARE WAS ORIGINALLY PURCHASED. Sega of America cannot offer credit or exchanges for merchandise purchased through your retail store. If you have questions about the warranty service, contact Sega Consumer Service Department at <http://www.sega.com> or 1-800-USA-SEGA. Instructions en français, téléphoner au: 1-800-872-7342.

OUT OF WARRANTY REPAIRS AND REPAIRS AFTER EXPIRATION OF WARRANTY

If your Sega Dreamcast GD-ROM requires repairs after the termination of the 90-day limited warranty period, you may contact Sega at the web site or 800 number listed above for instructions on receiving technical support and repair service.

LIMITATIONS ON WARRANTY

Any applicable implied warranties, including warranties of merchantability and fitness for a particular purpose, are hereby limited to 90-days from the date of purchase and are subject to the conditions set forth herein. In no event shall Sega of America, Inc., be liable for consequential or incidental damages resulting from the breach of any express or implied warranties. The provisions of this limited warranty are valid in the United States only. Some states do not allow limitations on how long an implied warranty lasts, or exclusion of consequential or incidental damages, so the above limitation or exclusion may not apply to you. This warranty provides you with specific legal rights. You may have other rights which vary from state to state.

ESRB RATING

This product has been rated by the Entertainment Software Rating Board. For information about the ESRB rating, or to comment about the appropriateness of the rating, please contact the ESRB at 1-800-771-3772.

Sega is registered in the U.S. Patent and Trademark Office. Sega, Dreamcast, the Dreamcast logo, and Time Stalkers are either registered trademarks or trademarks of SEGA Enterprises, Ltd. All Rights Reserved. This game is licensed for use with the Sega Dreamcast system only. Copying and/or transmission of this game is strictly prohibited. Unauthorized rental or public performance of this game is a violation of applicable laws. ©SEGA ENTERPRISES, LTD., 2000. Sega of America, P.O. Box 7639, San Francisco, CA 94120. All rights reserved. Programmed in Japan. Made and printed in the USA.

Product covered under one or more of the following: U.S. Patents No's: 5,460,374; 5,627,895; 5,688,173; 4,442,486; 4,454,594; 4,462,076; Re. 35,839; Japanese Patent No. 2870538 (Patents pending in U.S. and other countries); Canadian Patent No. 1,183,276.